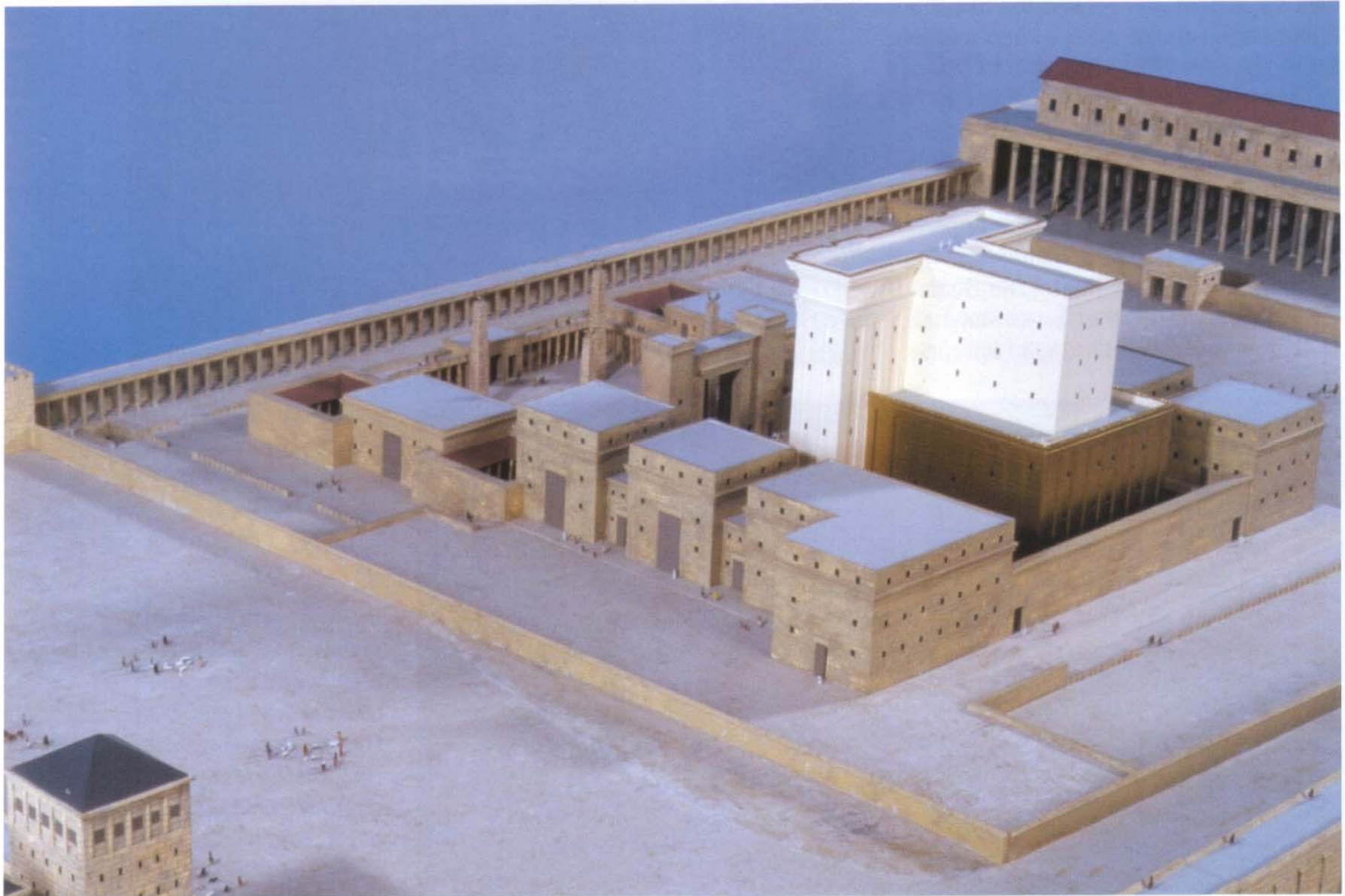
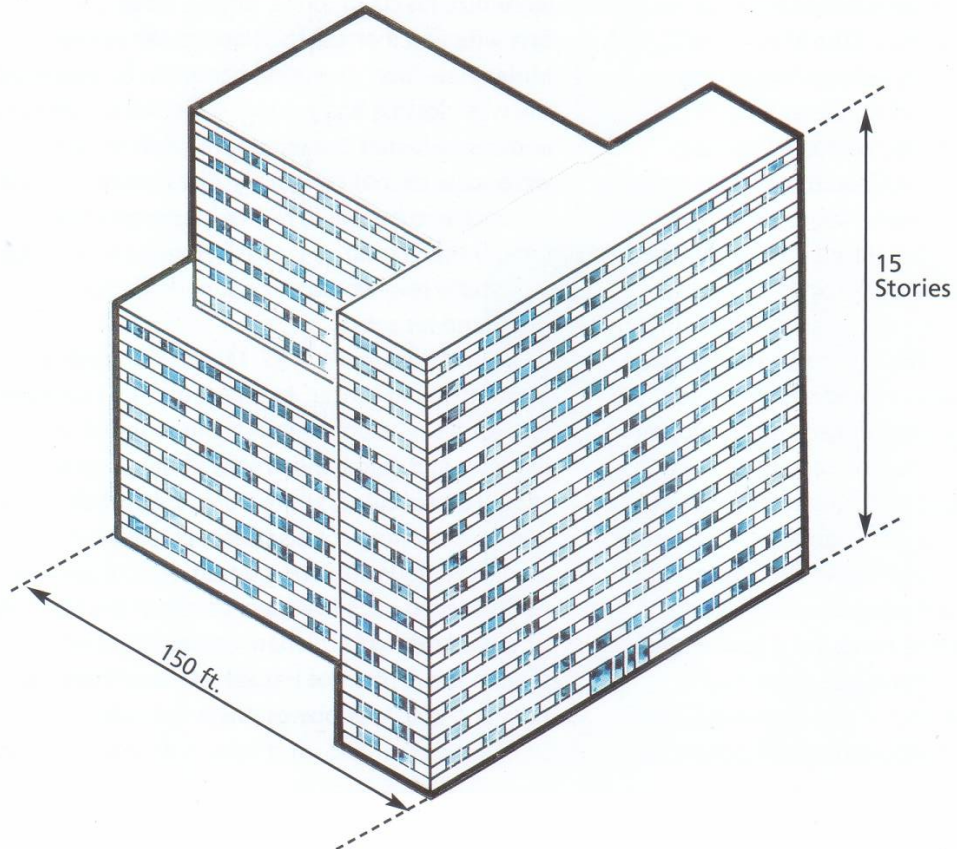
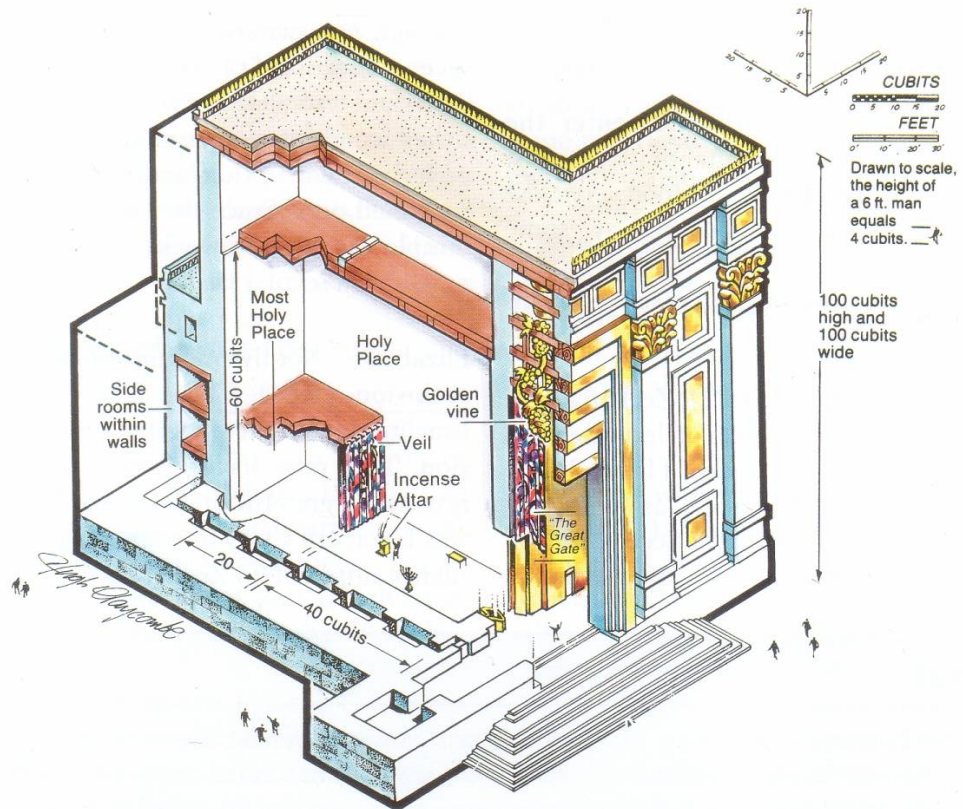
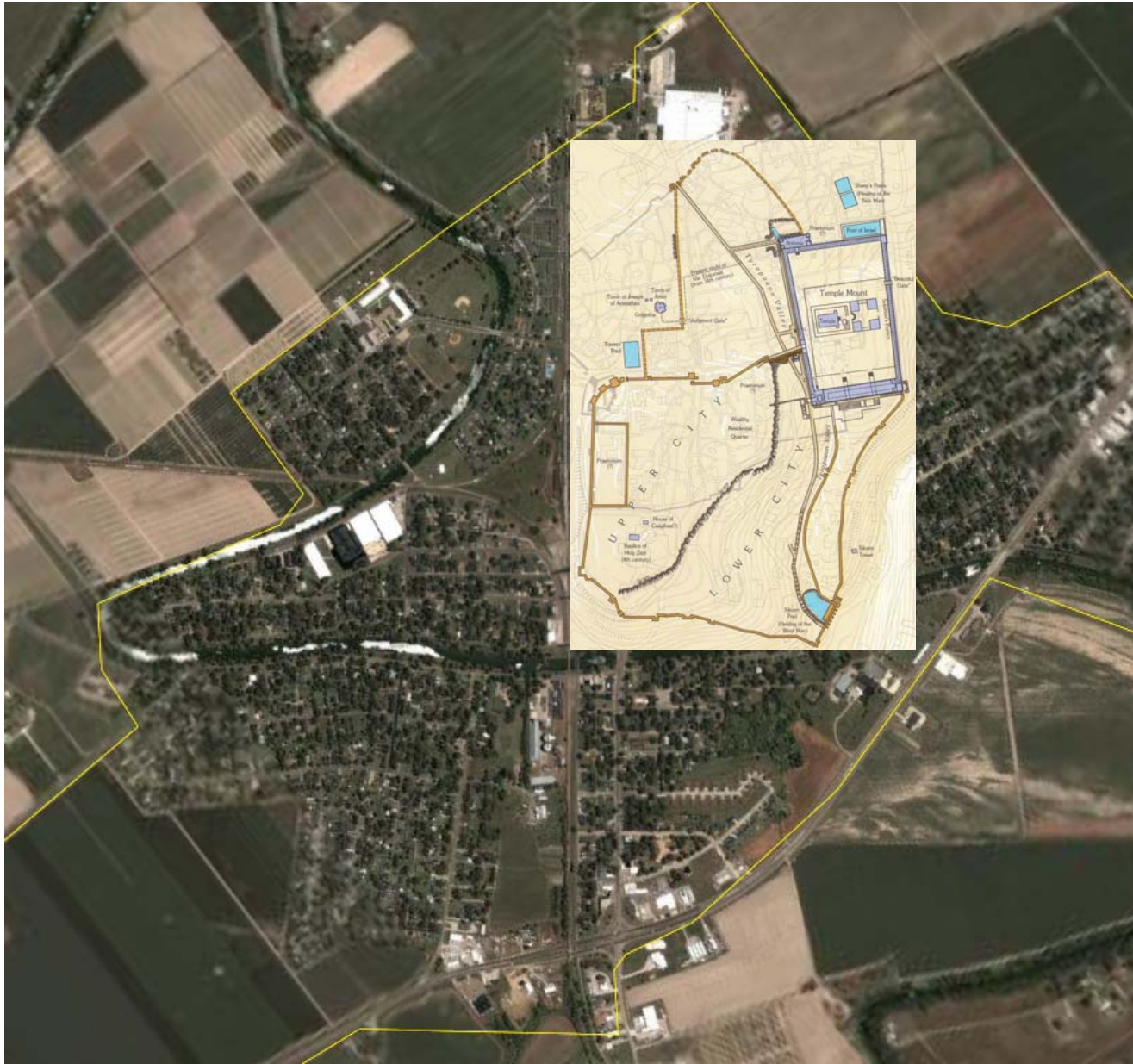


[The Atlas of Biblical Jerusalem, Dan Bahat]



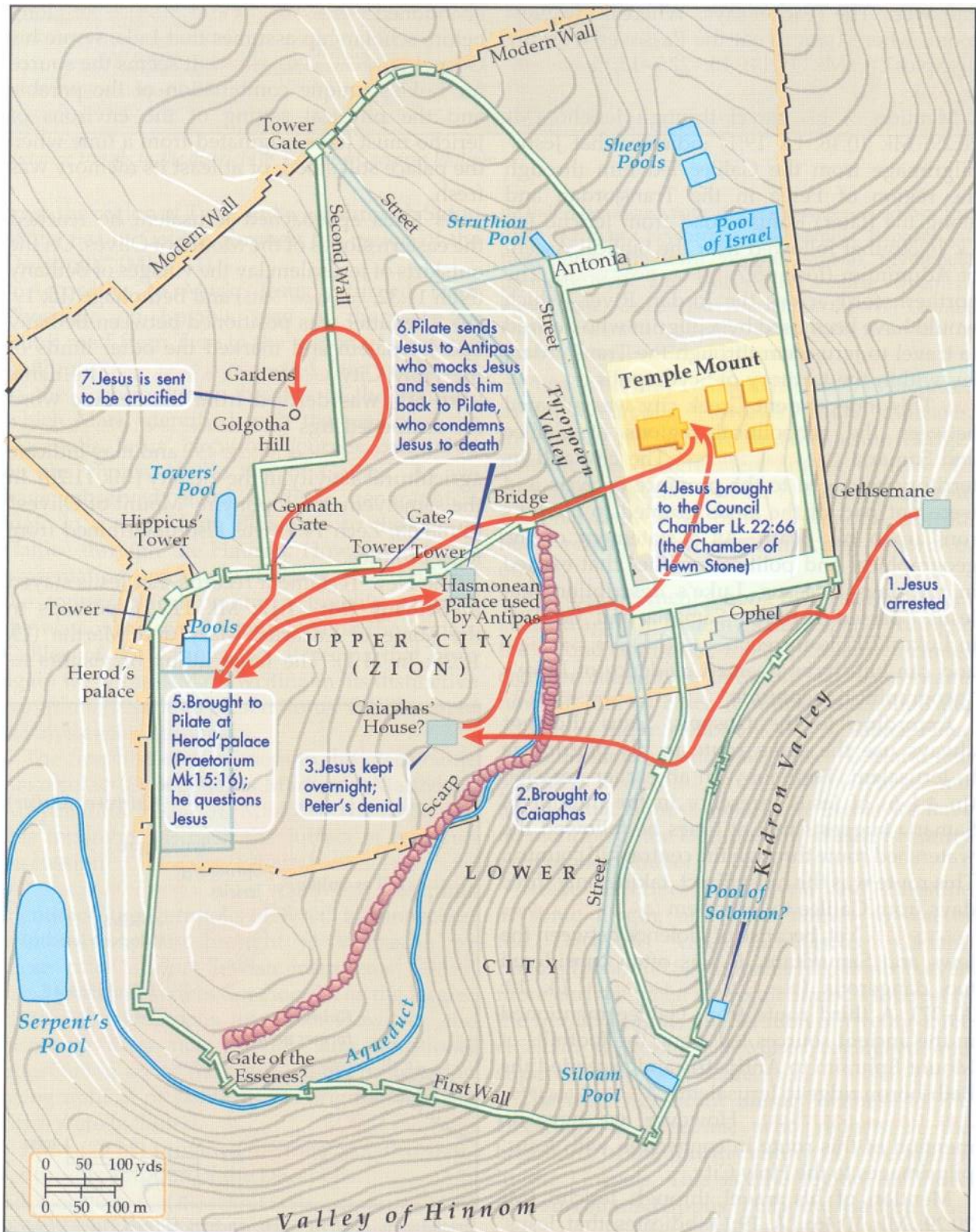
[*Jerusalem in the Year 30 AD, Ritmeyer*]





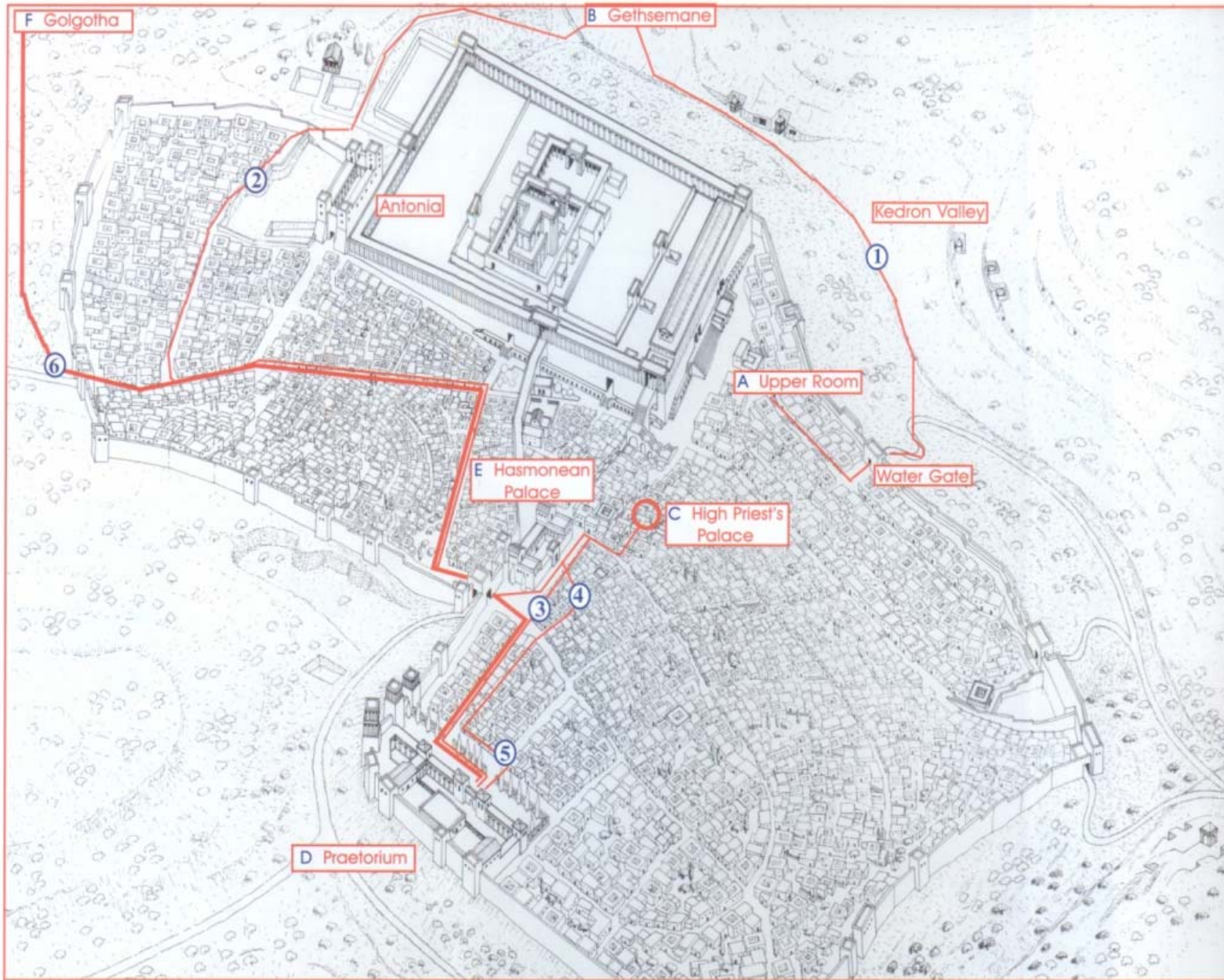


[The Sacred Bridge Rainey/Notley]



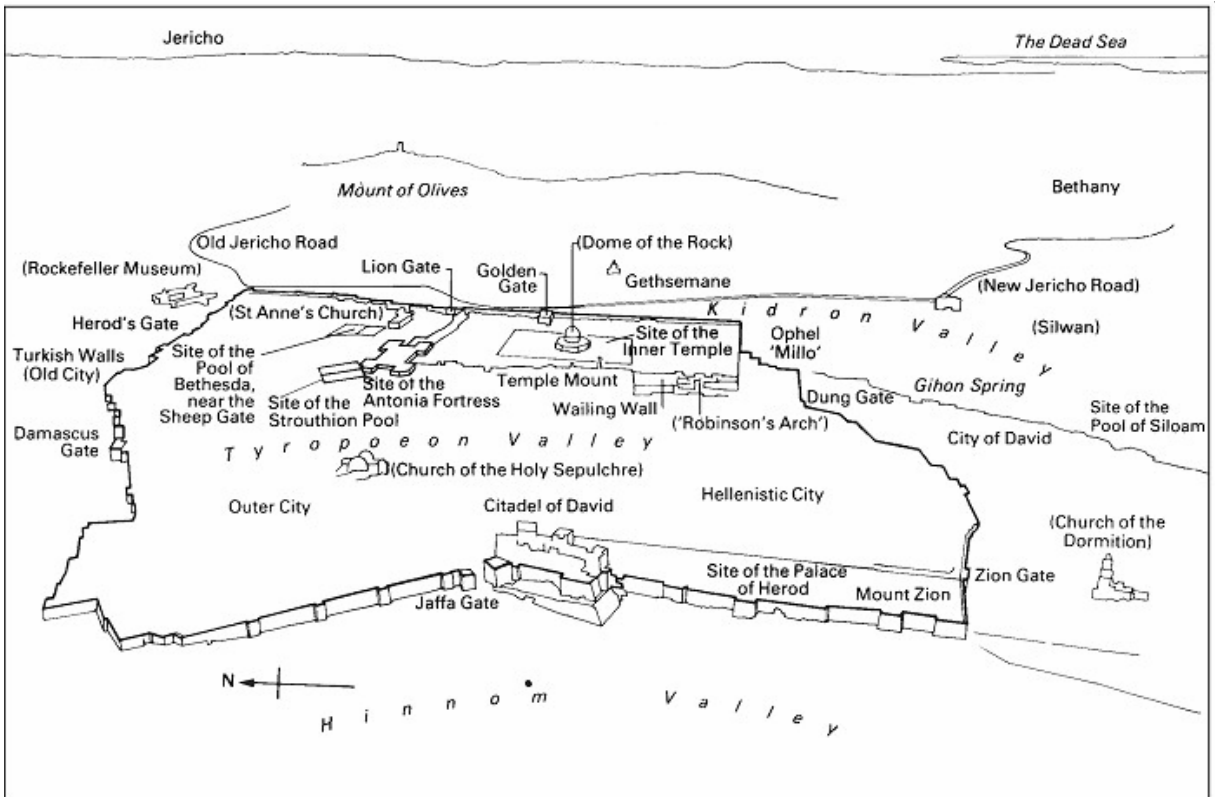
The arrest, interrogation and execution of Jesus.

[Traditional Route]



[Jerusalem in the Year 30 AD, Ritmeyer]

[Alternative Route]



New Bible Atlas