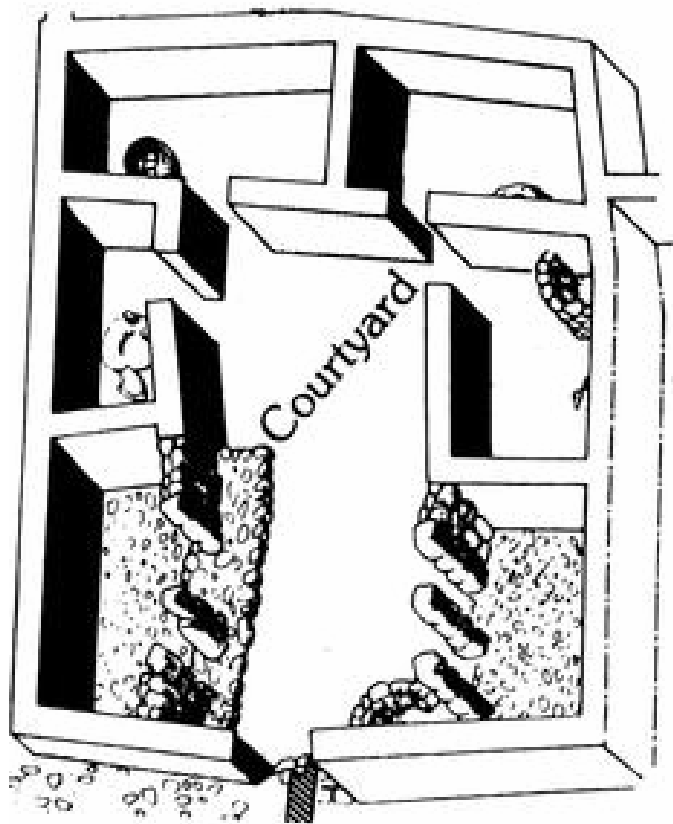


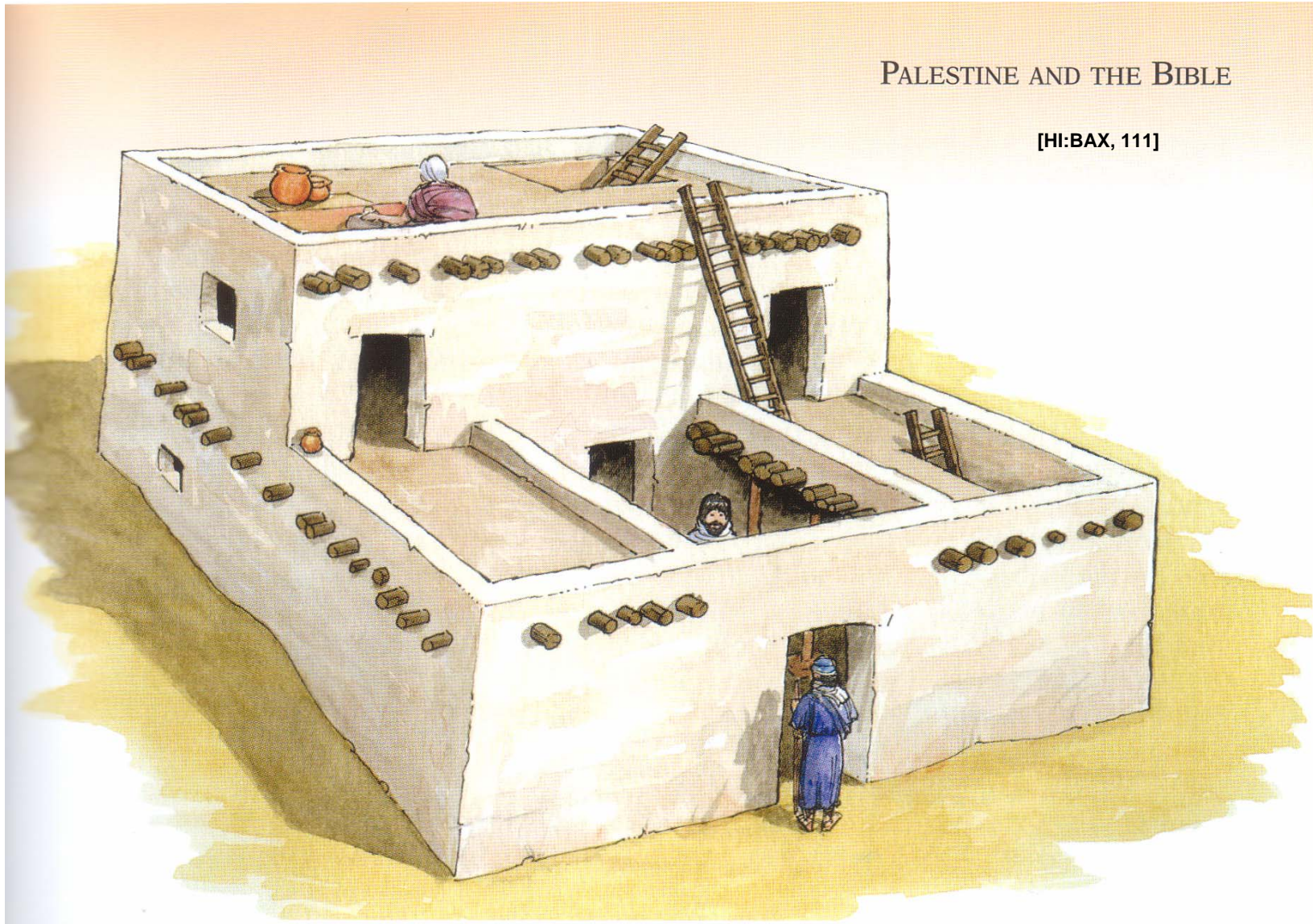
[HI:BAX, 111]



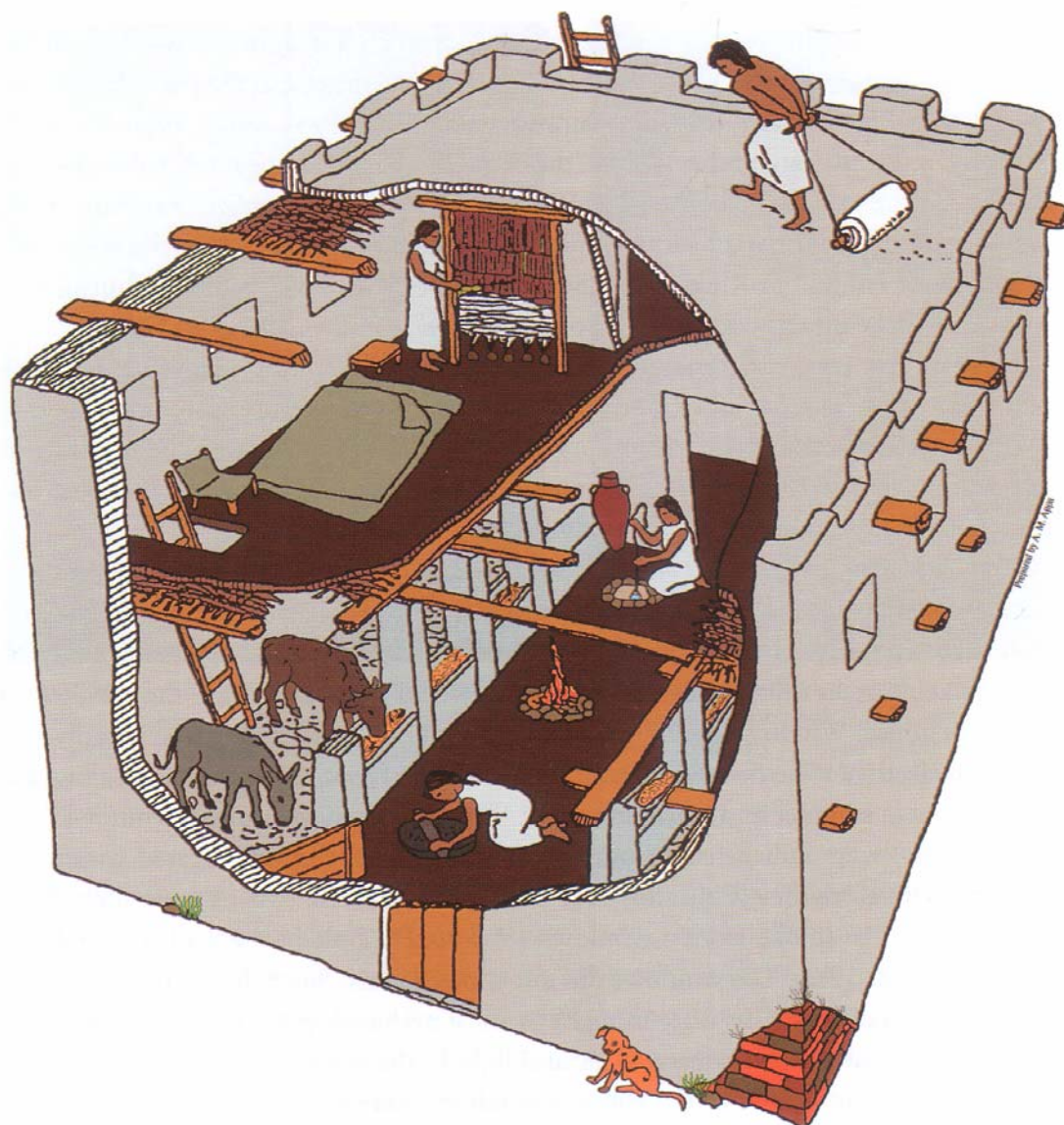
BAR 29:05 (Sep/Oct 2003). Biblical Archaeology Society.

PALESTINE AND THE BIBLE

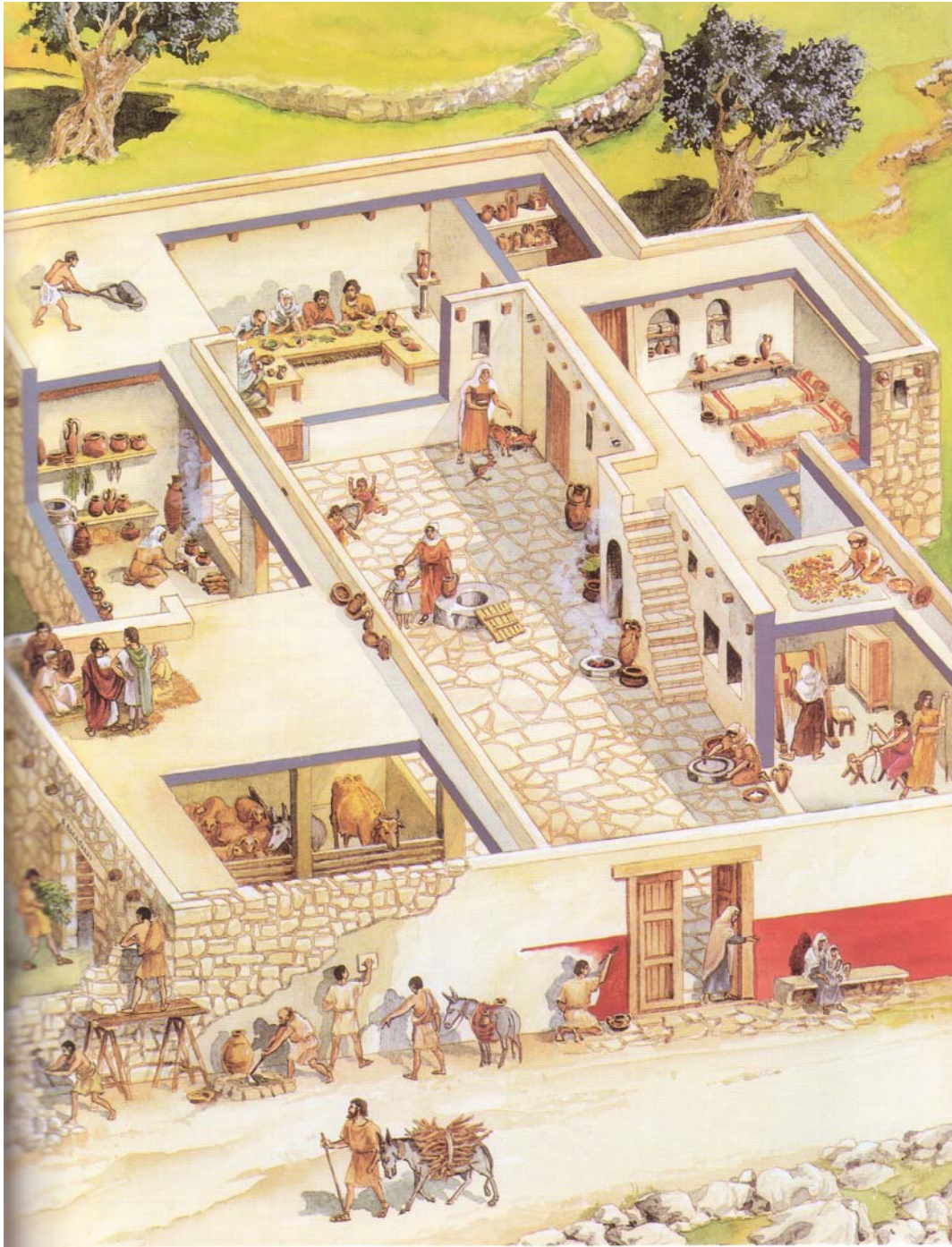
[HI:BAX, 111]



[HI:LBI, 29]



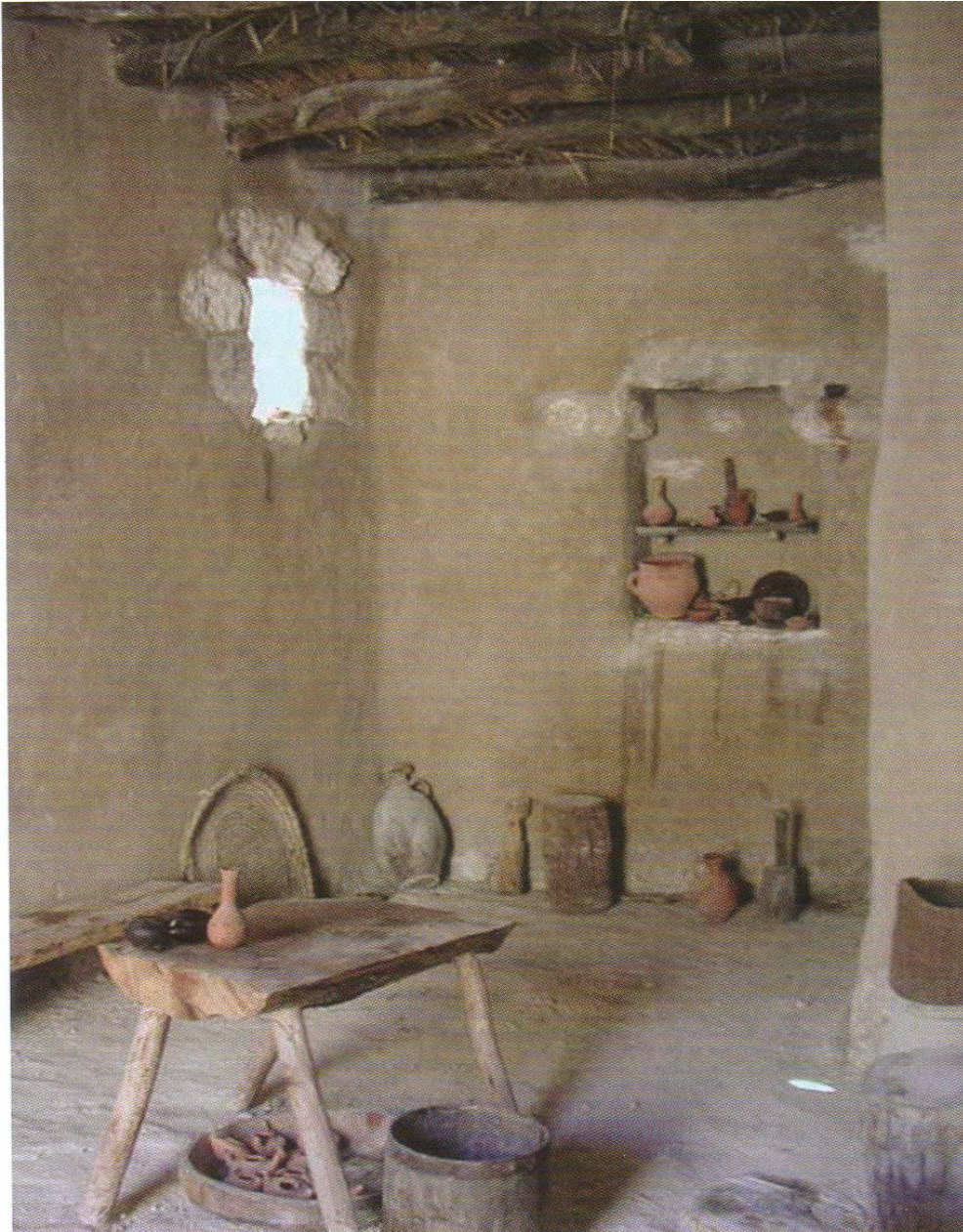
Ill. 15: Typical pillared house of the Israelites, Iron Age I; with stables, storage, food processing, and cistern on ground floor. The upper story is for sleeping, dining, and entertaining. A man with a roof roller keeps the plastered roof intact. (© Lawrence E. Stager)



[Daily Life at the Time of Jesus, p44]



[The Nazareth Jesus Knew, p22]

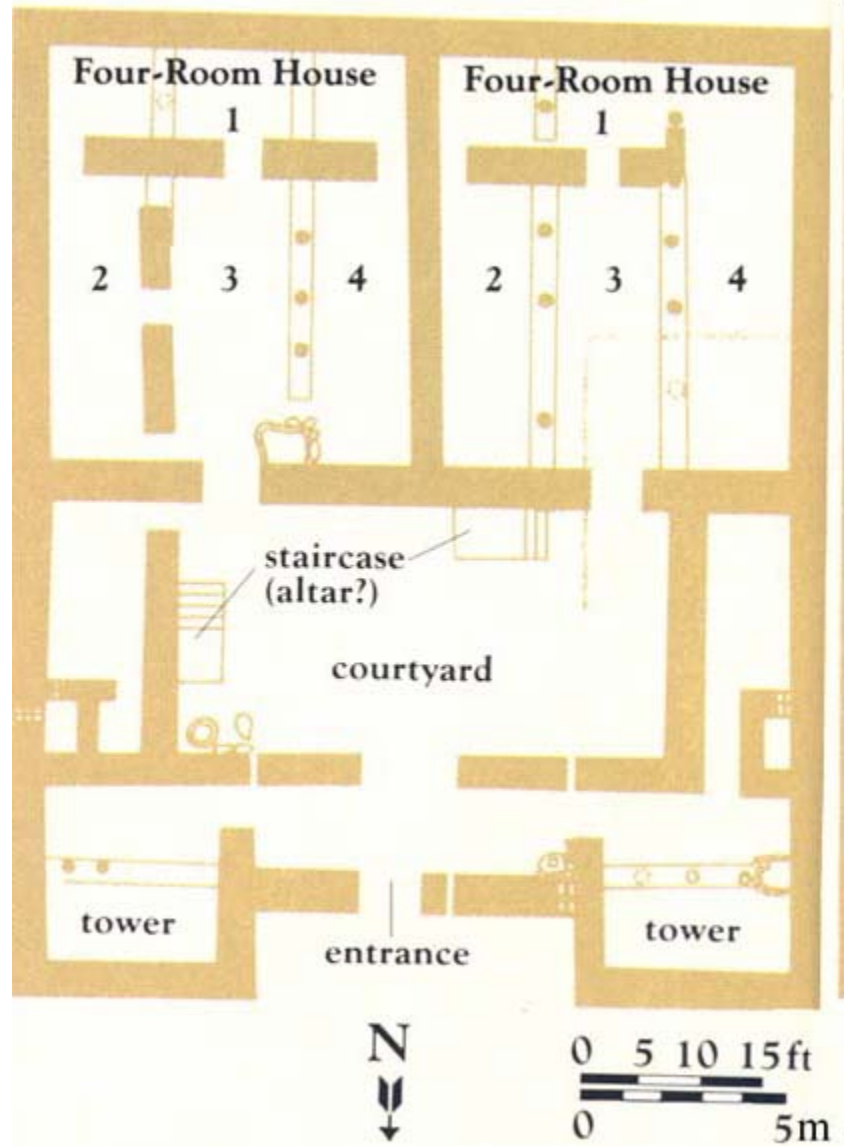


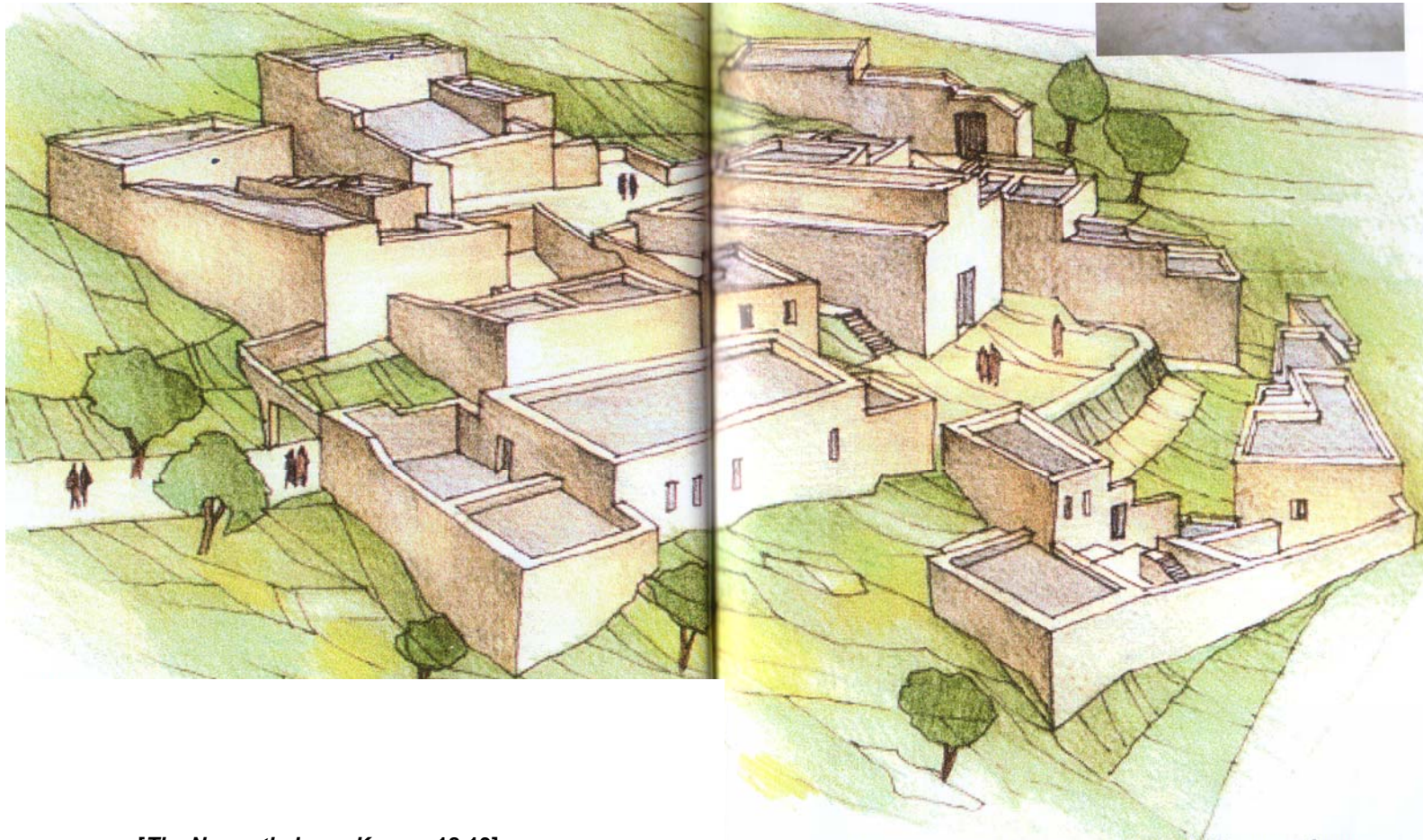
The Common Room

[*The Nazareth Jesus Knew*, p22]



[HI:LBI, 18]





[*The Nazareth Jesus Knew*, p18-19]

Because Nazareth was built on a steep hillside, many homes would have had an upper and lower level and could be entered from either direction.